

FUHR



autosafe 837/837P

Automatic locking systems with
electrically activated lever handle

www.fuhr.de



More security. For property and escape doors.

The **autosafe 837P** and **autosafe 837** series locks are ideal for property and escape doors with particularly high security and monitoring requirements. Thanks to their modern type 10 **Duo-Secure** technology with latching and hook bolt combination, they guarantee reliable, automatic locking of the door. To ensure that only authorised

persons gain access, the outside lever handle or the outside and inside lever handles are activated using access control or the cylinder key.

Thanks to various status messages, the door can be monitored remotely at any time. Special requirements, such as those of fire brigades, can also be met by the patented locking systems. The

switchable quiescent current function is available for this purpose, for example.



Controlled access. Automatically locked.

autosafe 837P

Thanks to the integrated panic function, the **autosafe 837P** ensures safe escape from the inside at all times in the event of danger. Users simply have to push the handle or panic push bar to open the door.

The outside lever handle is inactive in the basic position. To ensure that only authorised persons have access, the outside lever handle is electrically activated via an access control system.



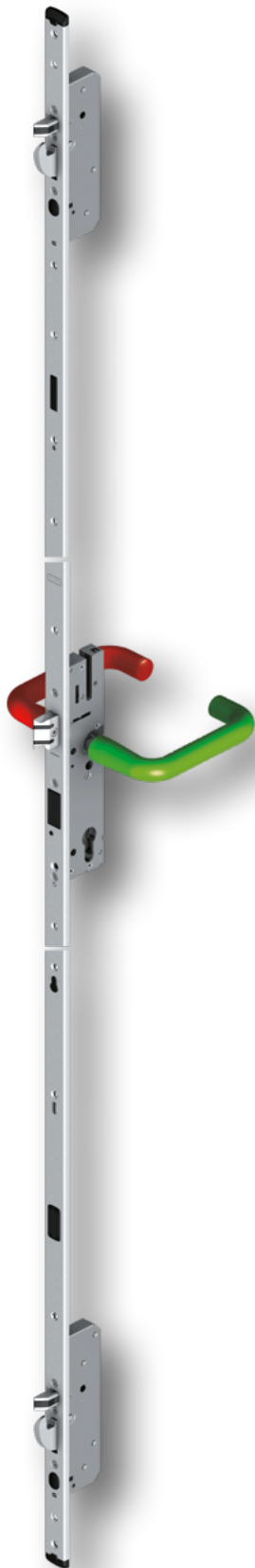
autosafe 837

The **autosafe 837** is ideal for passage doors that may only be accessed by authorised persons. In the basic position, both lever handles are inactive. To open the door, both handles are electrically activated simultaneously via an access control system.



autosafe 837/autosafe 837P

Convincing advantages for flexible use.



	autosafe 837P	autosafe 837
Outside lever handle electrically activated	●	
Outside and inside lever handle electrically activated		●
Short-time/permanent release	●	●
Panic function B/C according to EN 179/1125	●	
Fire-resistant design	●	●
Working current/quiescent current switchable	●	●
Connection to 12/24 V DC	●	●
Feedback locked	●	●
Feedback unlocked	●	●
Feedback Cylinder operated	●	●
Feedback inside lever handle operated	●	
Feedback outside lever handle activated	●	
Feedback outside lever handle operated	●	
Feedback lever handle activated		●
Feedback lever handle operated		●
Acoustic status signal	●	●
Standalone operation	●	●
Integration in building management with I/O module	●	●
Motor can be retrofitted	●	●
Rosette holes and long plate fixing from 35 mm backset	●	●
Low standby current consumption < 50 mA	●	●

Versatile functions

- ✓ Automatic locking
- ✓ Panic function B/C (autosafe 837P)
- ✓ Handle can be activated for short-term or permanent unlocking via access control, timer or building management system
- ✓ Can always be opened with the cylinder key
- ✓ Working current (handle de-energised deactivated) and quiescent current (handle de-energised activated) can be switched on the lock
- ✓ Universal power supply 12/24V

Flexible and easy application

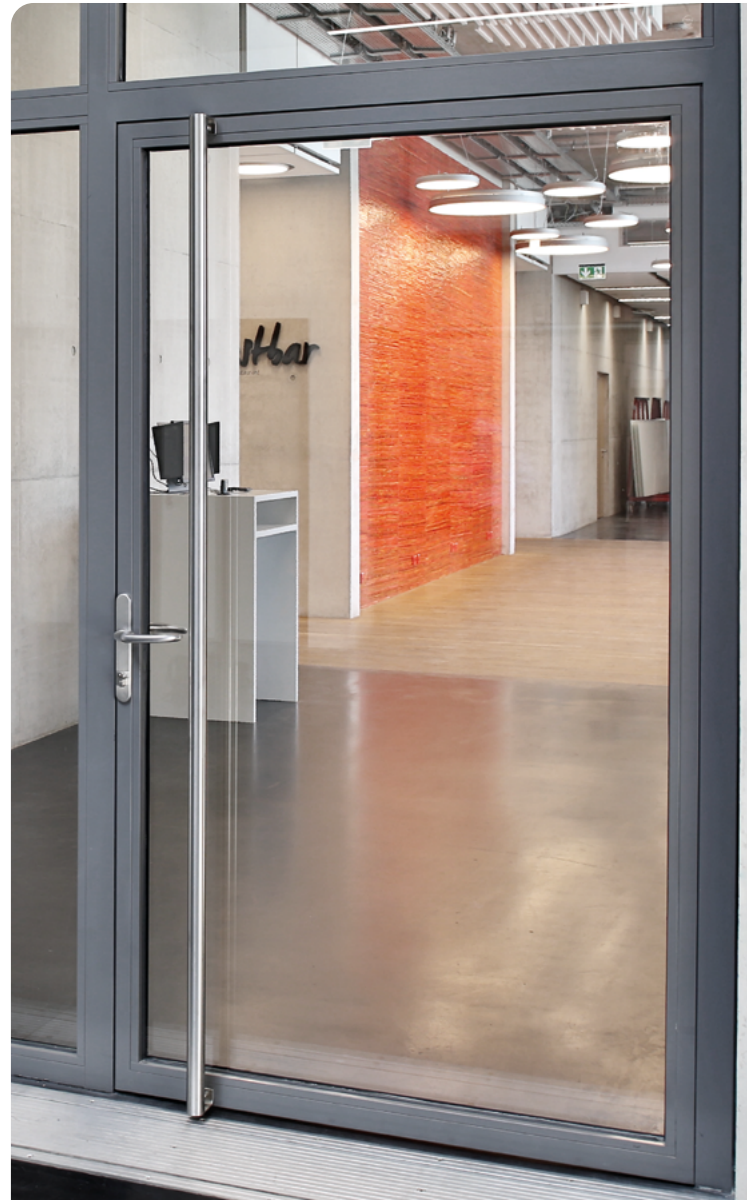
- ✓ For timber, aluminium and steel doors
- ✓ Compatible with FUHR system solutions with standardised routing and screw-on dimensions
- ✓ Compatible with the comprehensive range of FUHR frame parts for all profile and door systems
- ✓ Simple connection thanks to 2-wire BUS
- ✓ Extensive range of accessories
- ✓ Fire-resistant design as standard
- ✓ No freewheel cylinder required
- ✓ autotronic motor can be retrofitted
- ✓ Fastening options for rosette fittings and long plates from 35 mm backset

Reliable security

- ✓ Automatic locking and high security thanks to type 10 with DuoSecure technology
- ✓ Sturdy steel latching bolt with 20 mm throw in the main lock case
- ✓ Certified for escape door, security or fire protection applications
- ✓ Secure data transmission thanks to encrypted BUS communication
- ✓ Handle activation via integrated motor instead of solenoid

Optional monitoring possibilities

- ✓ Optional I/O modules for status monitoring and integration into building management systems
- ✓ 7 different status feedback signals: Unlocked, locked, cylinder operated, outside lever handle activated, inside lever handle activated, outside lever handle operated, sabotage message
- ✓ Acoustic messages: Lever handle activated, permanently unlocked, locked



FUHR multipoint locking systems – our security promise.

Certified security

The **autosafe 837P** and **autosafe 837** locking systems fulfil the highest security standards. Internal and independent external tests prove their consistent performance.

- Tested according to prEN 15685
- Tested according to EN 14846 for electromechanical locks
- Fulfils requirements according to DIN 18251-3, class 5
- Suitable for system tests in accordance with EN 1627 ff. up to RC4
- Suitable for system tests in accordance with EN 1634-1 (fire-resistant doors)
- Tested to BRL 3104 bis SKG***
- Certified in accordance with EN 179 and EN 1125 for emergency exit and panic doors (autosafe 837P)



Technical details

Locking type

- Type 10 – Automatic latching bolt with steel hook bolt

Centre

- PC 92 mm
- RC 94 mm

Follower

- 9 mm split (837P)
- 9 mm continuous (837)

Aluminium/steel doors

Faceplates

- **F 24 mm:**
 - 2170 mm – standard
 - 2400 mm – high
- **U 22 x 6/24 x 6/24 x 6.7 mm:**
 - 1790 mm – standard
 - 1990 mm – high

Backsets

- 35, 40, 45 mm

Surface

- Stainless steel ground finish

Timber doors

Faceplates

- **F 20 mm:**
 - 2170 mm – standard
 - 2400 mm – high
- **F 20 mm rounded:**
 - 1800 mm – standard
 - 2000 mm – high

Backsets

- 55, 65 mm

Surface

- Stainless steel ground finish



Main lock case with sturdy steel latching bolt and 20 mm throw



Type 10 automatic secondary locking with latching bolt and steel hook bolt

Article information
on all locks



Perfectly connected.

A wide range of connection options.

From standalone operation to complex integration into a building management system

Depending on requirements, a flexible decision can be made regarding how the **autosafe 837P/autosafe 837** automatic locks are connected.

If only controlled access is to be granted, **standalone operation** is recommended. The lever handle is activated by means of a potential-free or potential-loaded

switching signal via an access control system.

The locks also have the option of outputting a variety of status feedback signals. The **I/O module mini** is a particularly economical solution for analysing these or for integrating the locks into a building management system, while

the **I/O module plus** is a comprehensive solution. The tamper-proof 2-wire BUS connection makes connection particularly easy.

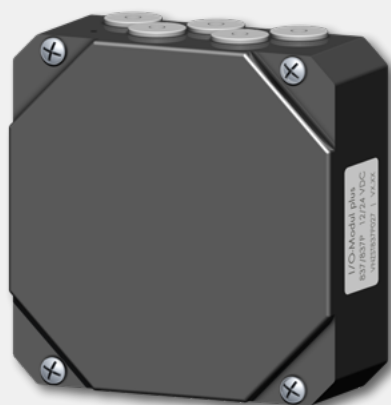


I/O module mini

Despite its compact dimensions, the **I/O module mini** always provides the most important status request on doors with remote monitoring thanks to its locked message. Depending on individual requirements, a further feedback signal can also be issued.

- Small module, e.g. for flush mounting or mounting in the control cabinet
- 2-wire BUS, encrypted, tamper-proof

- Input voltage: 12/24 V DC \pm 10%
- 2 feedbacks can be analysed:
 - 1x locked
 - 1x freely selectable from: unlocked, cylinder operated, outside lever handle activated, inside lever handle operated, outside lever handle operated
- Potential-free or potential-loaded opening impulse for short-time/continuous release



I/O module plus

The **I/O module plus** is suitable for particularly demanding applications, especially when comprehensive requirements are placed on the remote monitoring of property doors, e.g. in escape route security systems or intruder alarm system.

- In housing for surface mounting
- 2-wire BUS, encrypted, tamper-proof
- Input voltage: 12/24 V DC \pm 10%

- 7 feedback signals can be evaluated in parallel: unlocked, locked, cylinder operated, outside lever handle activated, inside lever handle operated, outside lever handle operated, sabotage message
- Potential-free opening impulse for short-time/continuous release
- Alarm system input for deactivating the opening signals
- Door contact



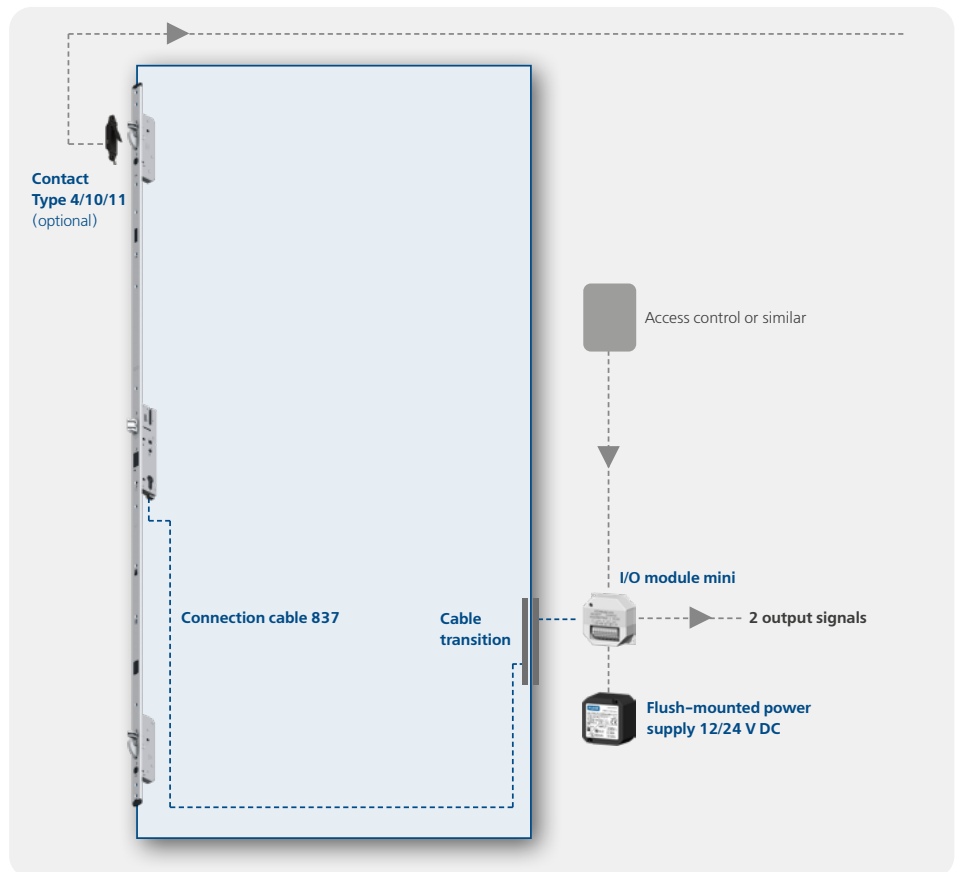
autosafe 837/autosafe 837P

Examples of connections.

Example 1:

Connection to I/O module mini

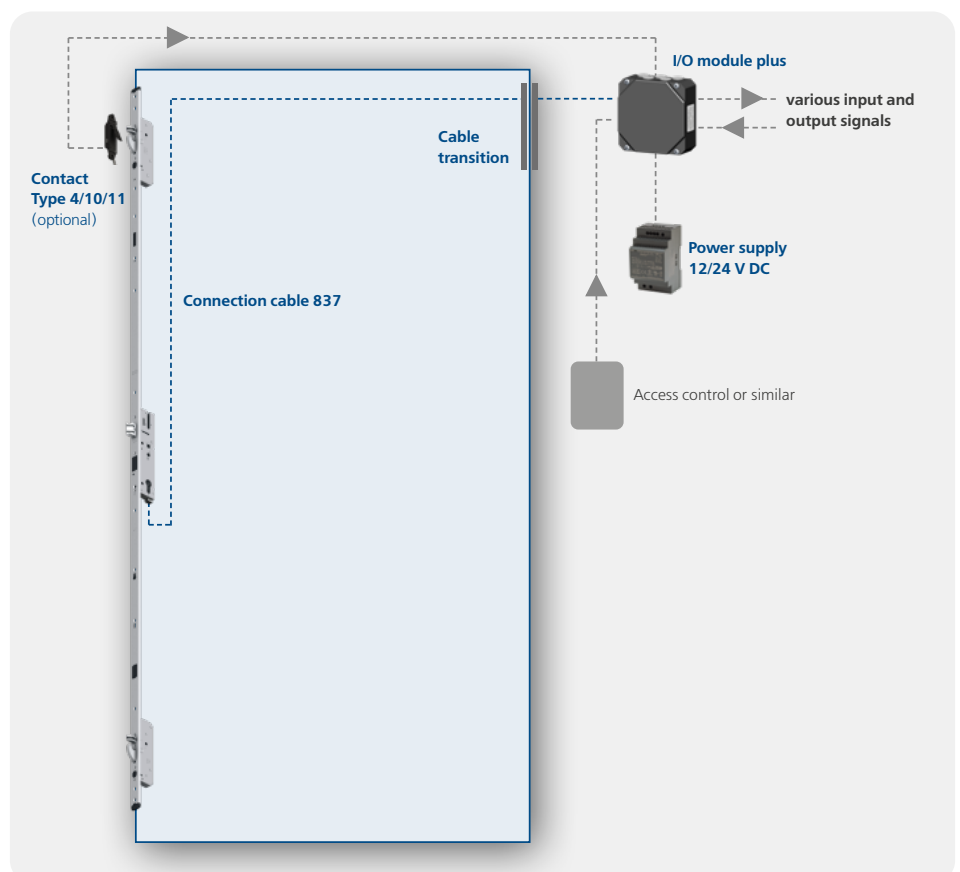
- Connection 837/837P with I/O module via 2-wire BUS
- Connection to access control
- 2 feedbacks (1x locked, 1x free selectable)



Example 2:

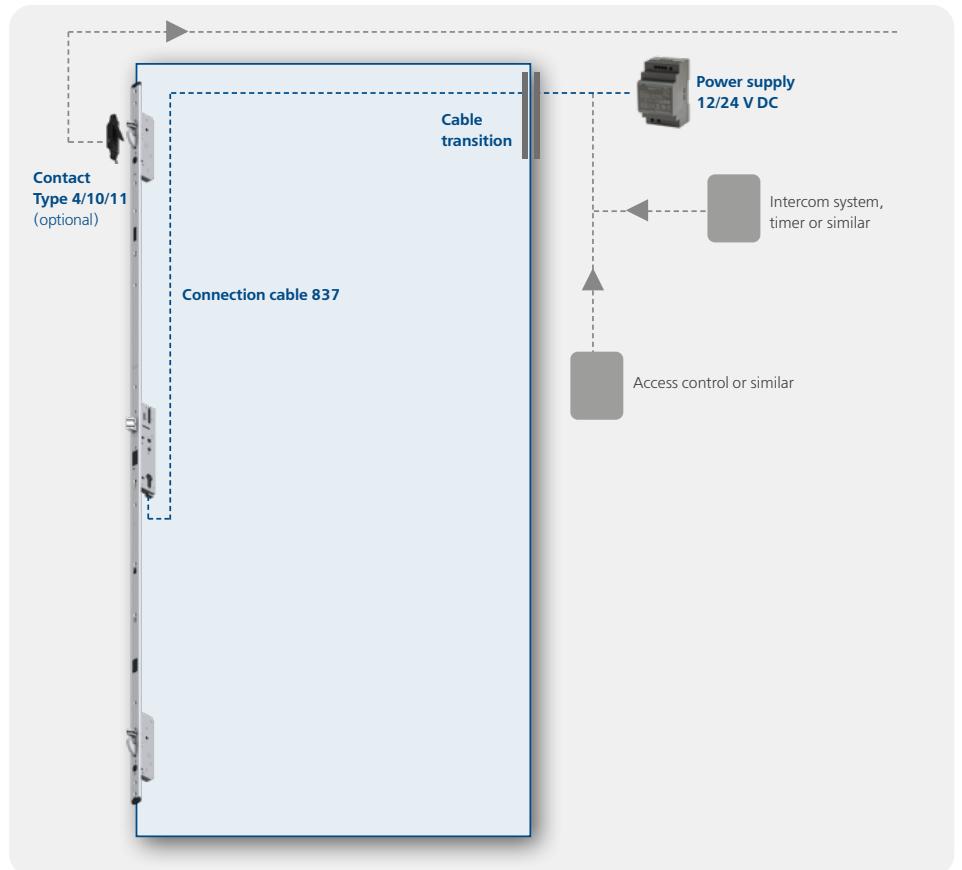
Connection to I/O module plus

- Connection 837/837P with I/O module via 2-wire BUS
- Connection to access control
- Connection to IDS, FAS, BMS
- 7 feedbacks



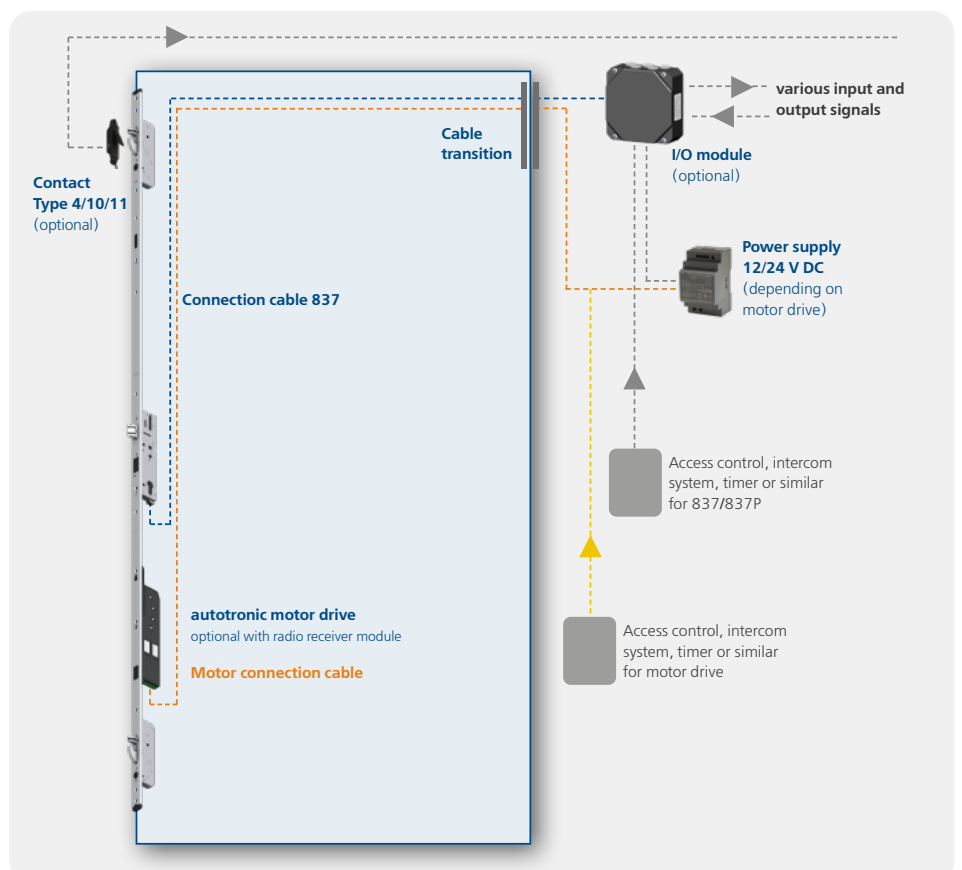
Example 3:
Standalone connection

- Direct connection to access control
- Direct connection to power supply



Example 4:
Combination with
autotronic motor drive

- Connection 837/837P with I/O module or standalone
- Connection to access control
- Separate motor connection
- E.g. combination with swing door drive



System technology for all doors. Sophisticated and flexible.

Well-proven frame parts for all door materials and profile systems

FUHR standard and one-piece strike plates for timber, aluminium and steel can be easily combined with **autosafe 837** and **autosafe 837P**. To do this, simply replace the standard latch part of the latch & deadbolt strike plate or the one-piece strike plate with a special 837 latching bolt box. This ensures compatibility with the latching bolt of the 837/837P locks, which extends to 20 mm.

The usual standard and one-piece strike plates type 4/10/11 are also used for the secondary locking devices.

Your benefits:

- ✓ Possible to use the various frame parts from the FUHR system solutions
- ✓ Milling and screw-on dimensions analogue to FUHR standard frame parts
- ✓ In addition to standard strike plates, one-piece strike plates are also available
- ✓ Matching frame parts, tailored for almost all aluminium profile systems
- ✓ Various solutions for rebated and flush timber doors
- ✓ Always appealing and consistent appearance in the door rebate
- ✓ Durable and secure thanks to high-quality materials



Standard and one-piece strike plates for aluminium and steel doors

Latch&deadbolt strike plate + **Strike plate type 4/10/11**



F 24 mm,
Ground stainless steel

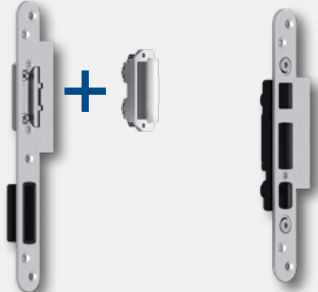
Latch&deadbolt strike plate + **Strike plate type 4/10/11**



U 24 x 6 mm/U 24 x 6,7 mm,
Ground stainless steel

Standard and one-piece strike plates for timber doors

Latch&deadbolt strike plate + **Strike plate type 4/10/11**



For flush doors,
F 24 mm, Lip 14 mm/17 mm/26 mm,
Ground stainless steel

Latch&deadbolt strike plate + **Strike plate type 4/10/11**



For rebated doors,
U 30 x 8 mm,
Ground stainless steel

Article information
on all frame parts



One-piece strike plates type 4/10/11

F 24 mm/U 24 mm, U 30 x 8 mm,
Ground stainless steel

Wide range of solutions thanks to extensive accessories.

Required accessories



Connection cable 837

10 m, 4-core



Cable transition

Surface-mounted, concealed or detachable



Power supply

Flush-mounted 12V/24V, top-hat rail 12V/24V, frame power supply 12V or 24V

Required accessories for standard and one-piece strike plates to combine with autosafe 837/837P



Latching bolt box

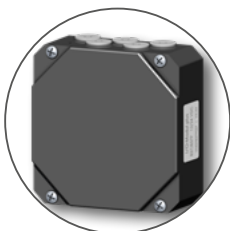
Matched to the respective latch & deadbolt strike plate/one-piece strike plate



Type 10 magnet release

Suitable for all standard/one-piece strike plates type 4/10/11

Optional I/O modules



I/O module plus

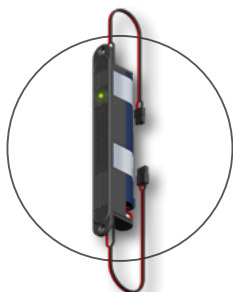
For surface mounting, with 7 feedback signals



I/O module mini

For flush-mounted or top-hat rail mounting, with 2 feedback signals

Optional accessories



Battery module

Standby time up to 20h (with I/O module) or 90h (standalone)



Mortise lock 803

For use during the construction phase



Deadbolt switching contact type 4/10/11

For monitoring the locking of the secondary bolts



autotronic motor drive

12V or 12/24V, can be retrofitted



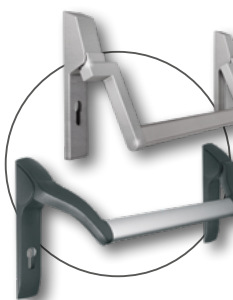
Motor connection cable

3-core, with motor plug



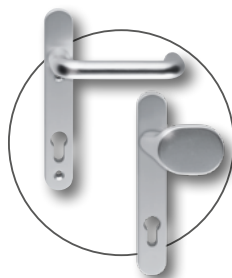
Contact magnet

When using a motor drive



Panic push bars

According to EN 1125, aluminium or stainless steel



Panic fittings

According to EN 179, aluminium

Article information
on all accessories



All images and details of products, dimensions and designs were accurate at the time of going to press. We reserve the right to make changes in the interest of technical progress. Claims relating to specific models or products cannot be asserted. We accept no liability for misprints.

Picture credit page 1, 5, 6: © Novoferm Vertriebs GmbH

Picture credit page 9: © Thomas Drexel/thomas-drexel@gmx.de, Bayerische Rieswasserversorgung/www.rieswasser.de; Architektur: Obel und Partner GbR, Freie Architekten BDA/www.obel-architekten.de



CARL FUHR GmbH & Co. KG
Locks and hardware

Carl-Fuhr-Straße 12
42579 Heiligenhaus
Germany

Tel.: +49 2056 592-0
www.fuhr.de · info@fuhr.de



For more information on
this product series, such as
installation and accessories,
please visit our website.